

Section 4.2 answers

1a) $L = 500 - W$

1b) $A = 500W - W^2$

1c) Domain $0 \leq W \leq 500$

1d) Width = 250 meters

1e) $L = 250$ meters

1f) $A = 62,500$ square meters

3a) $L = 1000 - 2W$

3b) $A = 1000W - 2W^2$

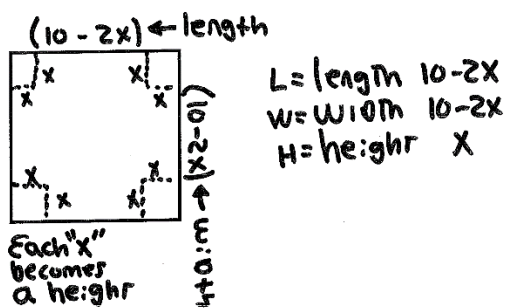
3c) Domain $0 \leq W \leq 500$

3d) Width 250 meters

3e) Length = 500 meters

3f) Area = 125,000 square meters

5a)



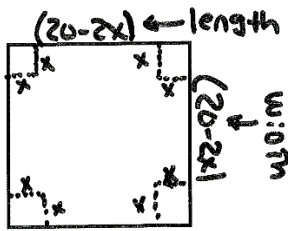
5b) $V = 4x^3 - 40x^2 + 100x$

5c) $0 \leq x \leq 5$

5d) $x = 5/3$ inches

5e) Volume = 74.07 cubic inches or $2000/27$ cubic inches

7a)



$$\begin{aligned} \text{length} = L &= 20 - 2x \\ \text{width} = w &= 20 - 2x \\ \text{height} = H &= x \end{aligned}$$

7b) $V = 4x^3 - 80x^2 + 400x$

7c) $0 \leq x \leq 10$

7d) $x = 10/3$ inches

7e) Volume = 592.59 cubic inches or $16000/27$ cubic inches